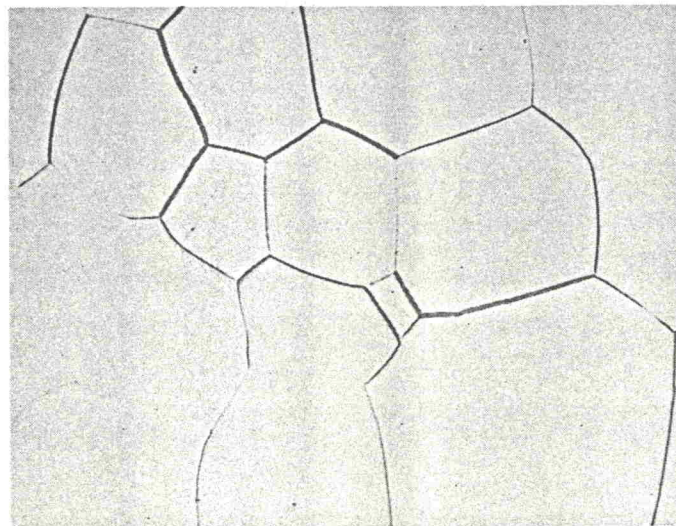


6. PLANSEE SEMINAR

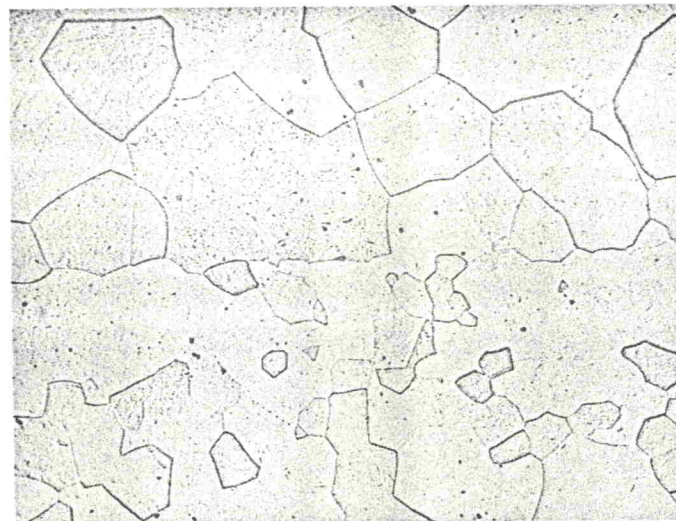
---

fluoric acid solution produced satisfactory bonding surfaces. The structure and chemical, mechanical, and physical properties of the bond area are consistent with those of the parent metal. Fig. 1 shows a typical solid-phase bond in this system.



Bond Interface

Fig. 1. Columbium self bond.  $\times 100$ .



Bond Interface

Fig. 2. Columbium-6 w/o vanadium alloy self bond.  $\times 100$ .